



Mechanical | Electrical | Plumbing

Your Vision, Engineered.

From Blueprints to Red-line - Complete MEP Excellence

Kingdom of Saudi Arabia
2025

Our Core Identity

Our Mission

To deliver exceptional, end-to-end MEP solutions by integrating advanced technology, superior engineering, and a commitment to quality, ensuring every project is completed on time, within budget, and exceeds our clients' expectations in the Kingdom of Saudi Arabia.

Our Vision

To be the leading MEP partner in Saudi Arabia, recognized for transforming the industry through digital innovation and sustainable practices—from the first blueprint to the final red-line.

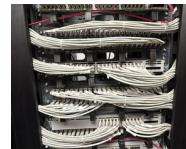


EVERY SWITCH, EVERY DROP

“

From the dawn's first light to the soothing hum of air conditioning, MEP quietly orchestrates our daily rhythm. Good MEP is more than convenience; it's the heartbeat of modern living.

B2R MEP



ELECTRICAL



MECHANICAL



PLUMBING

Founder's Message

“



Mohammed Al-Johani

Founder & CEO

B2R MEP was born from a vision to create a new standard for MEP contracting in Saudi Arabia. In an era of unprecedented growth driven by Vision 2030, the Kingdom deserves engineering partners who are as ambitious and forward-thinking as the projects they serve.

Our name reflects our promise: We are with you from the very first **B**lueprint **to** the final **R**ed-line. The '2' in our name represents our commitment to digital transformation—integrating the most advanced technology and sustainable practices to deliver not just buildings, but legacies.

We are proud to be a Saudi company, dedicated to building a smarter, more efficient, and sustainable future for the Kingdom. We don't just see ourselves as contractors; we are your dedicated partners in turning vision into reality.

Who We Are: From Blueprint to Red-line

Our name is our process.

B

Blueprint

It all starts here. We partner with you at the earliest design stages, providing expert consultation, value engineering, and detailed plans to ensure a project is set up for success.

2

The Digital Bridge

The '2' signifies our commitment to the future. We bridge the gap between design and construction using advanced technology, BIM modeling, and digital project management to ensure seamless execution and sustainability.

R

Red-line

We deliver. Our commitment extends to the final handover, providing meticulous testing, commissioning, and comprehensive as-built "red-line" documentation that guarantees quality and simplifies long-term facility management.



Our comprehensive approach covers the entire project lifecycle

Our Services



A Comprehensive Suite of MEP Solutions

From design to implementation, B2R MEP delivers end-to-end solutions for all your mechanical, electrical, and plumbing needs.



Mechanical

- HVAC Systems
- Chilled Water Systems
- Ventilation
- Smoke Management
- Building Automation (BMS)



Plumbing & Drainage

- Water Supply Systems
- Drainage Networks
- Sanitary Works
- Rainwater Harvesting
- Water Treatment



Low Current & ELV

- Data & Voice Systems
- CCTV & Security
- Access Control
- Public Address Systems
- Audio-Visual Solutions



Electrical

- Power Distribution (HV/LV)
- Lighting Systems
- Substations
- Emergency Power Solutions
- Energy Management



Fire Safety

- Fire Fighting Systems
- Sprinkler Systems
- Fire Alarm & Detection
- Emergency Evacuation
- Fire Suppression



Sustainability & Digital

- Energy Modeling
- BIM Coordination
- Smart Building Integration
- Renewable Energy Solutions
- Green Building Certification

Our Approach & Methodology

A Disciplined Path to Excellence

1 Design & Pre-Construction

Value Engineering, BIM Modeling, Subcontractor Qualification, and detailed planning to ensure project success from the start.

2 Procurement & Logistics

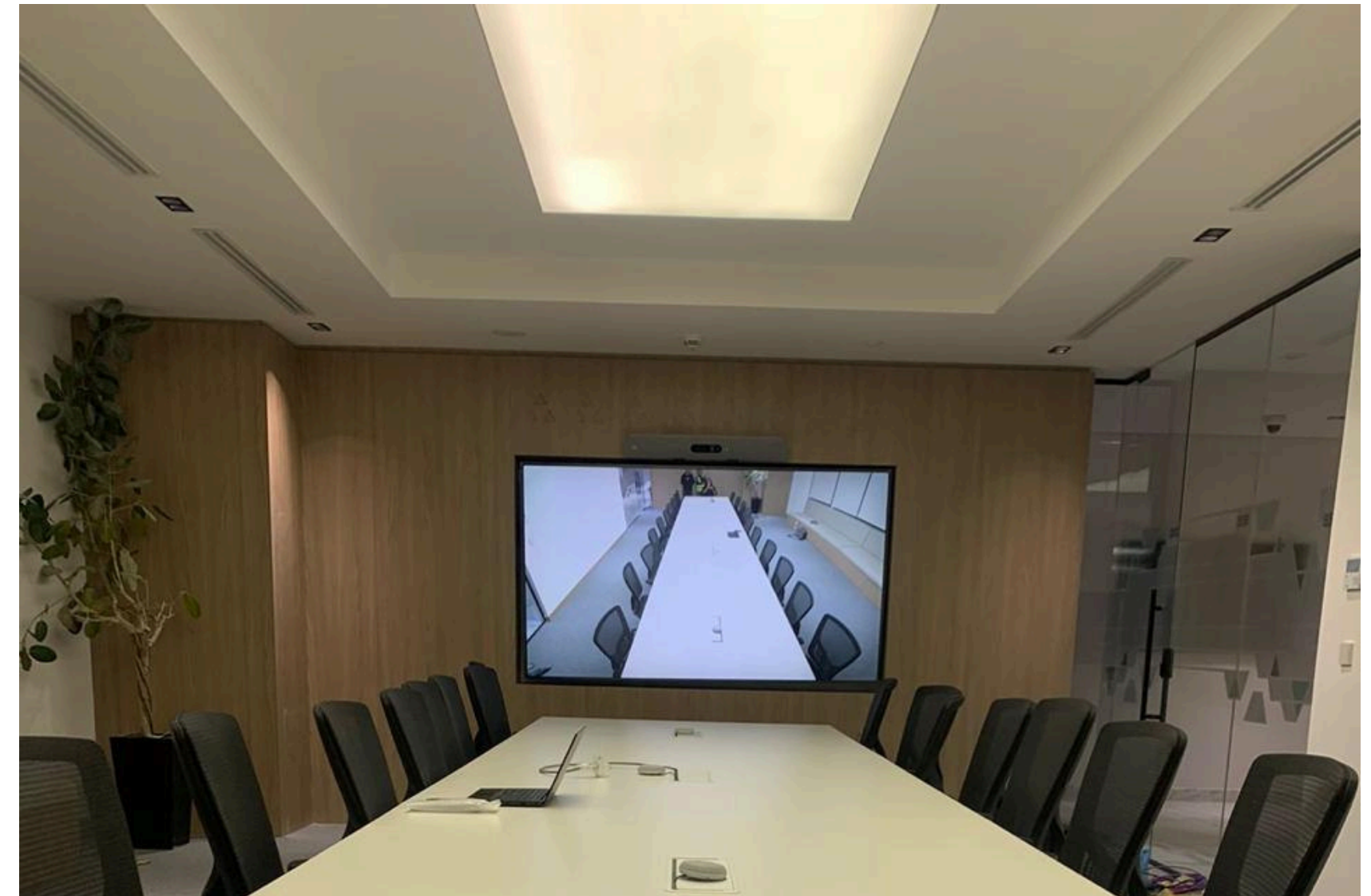
Material Submittals, Quality Control, and Supply Chain Management to ensure timely delivery of quality components.

3 Project Execution

Site Mobilization, Safe Installation, and Quality Assurance Checks with digital tracking and real-time reporting.

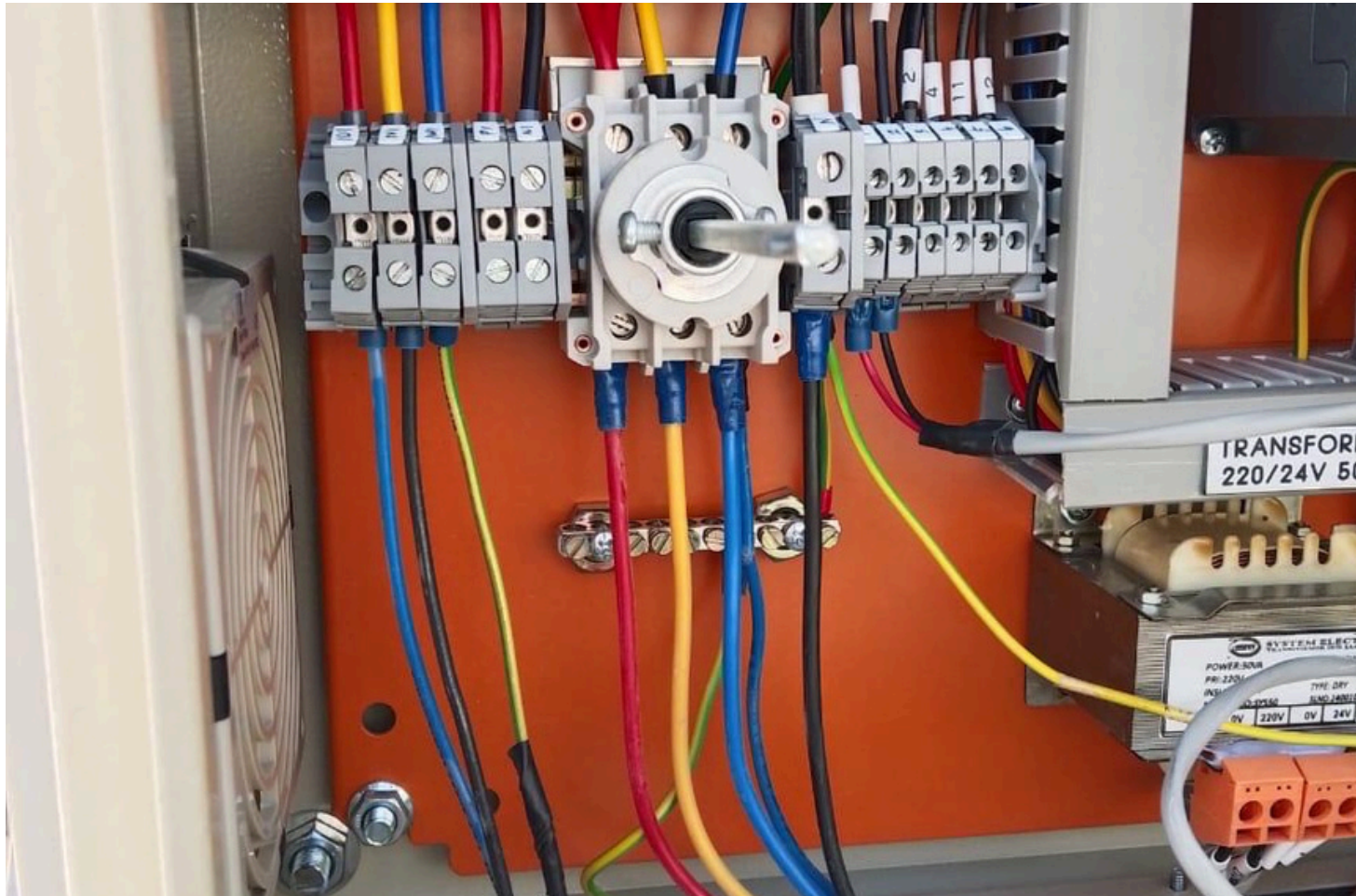
4 Testing & Commissioning

System Verification, Performance Testing, and Client Training to ensure all systems operate at peak efficiency.



Advanced MEP Systems Integration

Our Commitment to Quality & Safety



✓ Quality

B2R MEP is committed to a 'get it right the first time' philosophy, implementing rigorous quality assurance and control at every project stage.

Comprehensive quality planning and regular inspections
Detailed documentation and continuous improvement

🛡️ Health & Safety

The well-being of our employees, partners, and the community is our highest priority. We foster a zero-incident culture.

Comprehensive safety training and risk assessments
Strict adherence to Saudi and international regulations

🌐 Environment

We are dedicated to building a sustainable future for Saudi Arabia through energy-efficient systems and waste reduction.

Energy-efficient MEP systems and waste minimization
Supporting Saudi Arabia's sustainability goals and Vision 2030

Future Certifications



ISO 9001
Quality Management

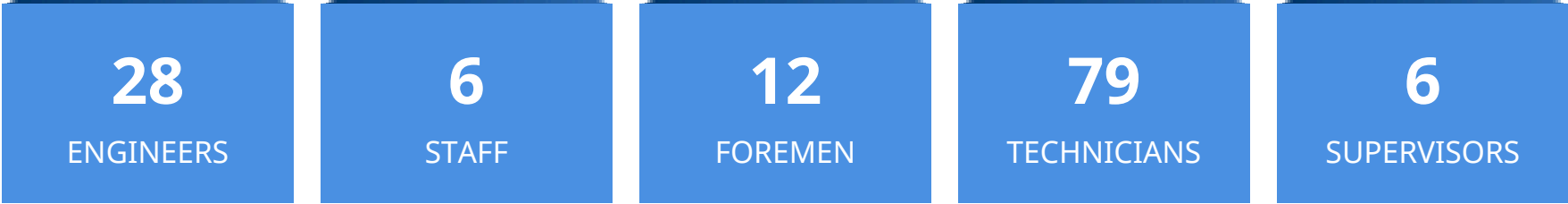


ISO 45001
Occupational H&S



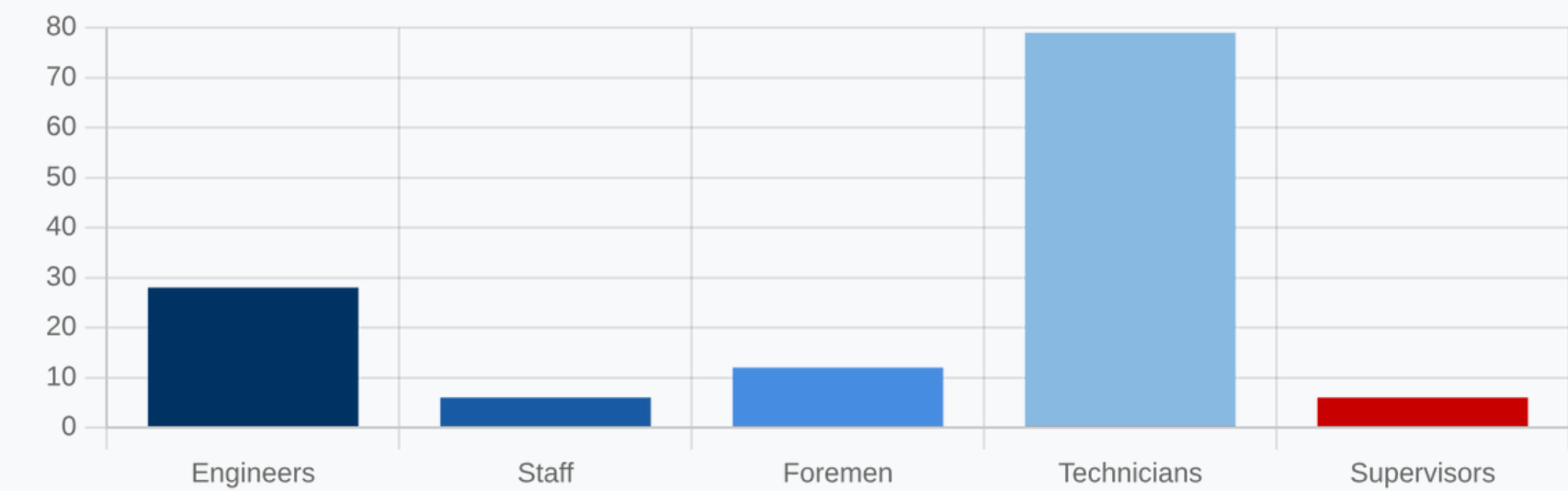
ISO 14001
Environmental

Our Team

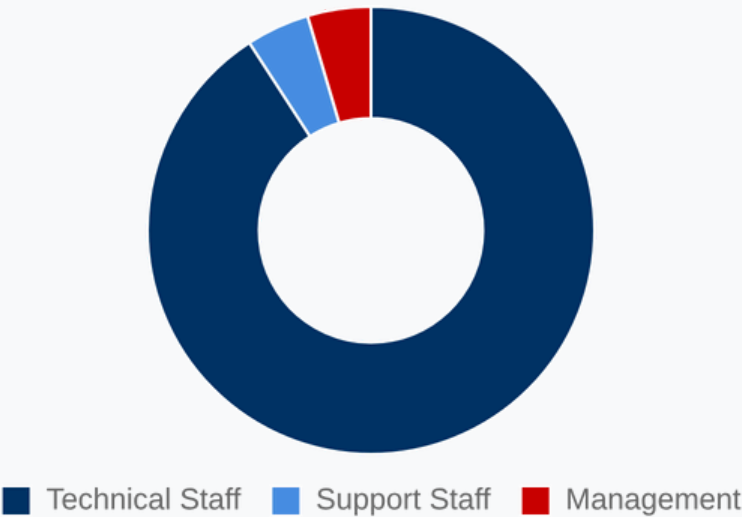


CATEGORY	KEY POSITIONS	COUNT
SUPERVISORS	Project Managers	4
	MEP Engineers	5
ENGINEERS	Site Engineers	6
	QA/QC & HSE	7
TECHNICIANS	Civil & Electrical	4
	Mechanical (HVAC)	3
FOREMAN	Mechanical (Piping)	5
STAFF	HVAC & Duct	26
	Pipe Fitters	20
	Electricians	20
	Plumbers & Others	13
TOTAL WORKFORCE		131

Team Distribution



Workforce Breakdown



Project Portfolio

B2R MEP, both independently and alongside its network of partners, has successfully completed numerous MEP projects across Saudi Arabia.



HOSPITALITY



OFFICES



RETAIL

EXECUTED PROJECTS

HOSPITALITY



Chottomatte

Riyadh

Complete MEP design and installation for this high-end Japanese restaurant featuring sophisticated lighting systems, advanced HVAC for optimal dining comfort, and specialized kitchen ventilation.



Aseeb

Riyadh

Luxury restaurant MEP systems including premium electrical installations, climate control systems, and integrated building management for seamless operations and exceptional guest experience.

EXECUTED PROJECTS

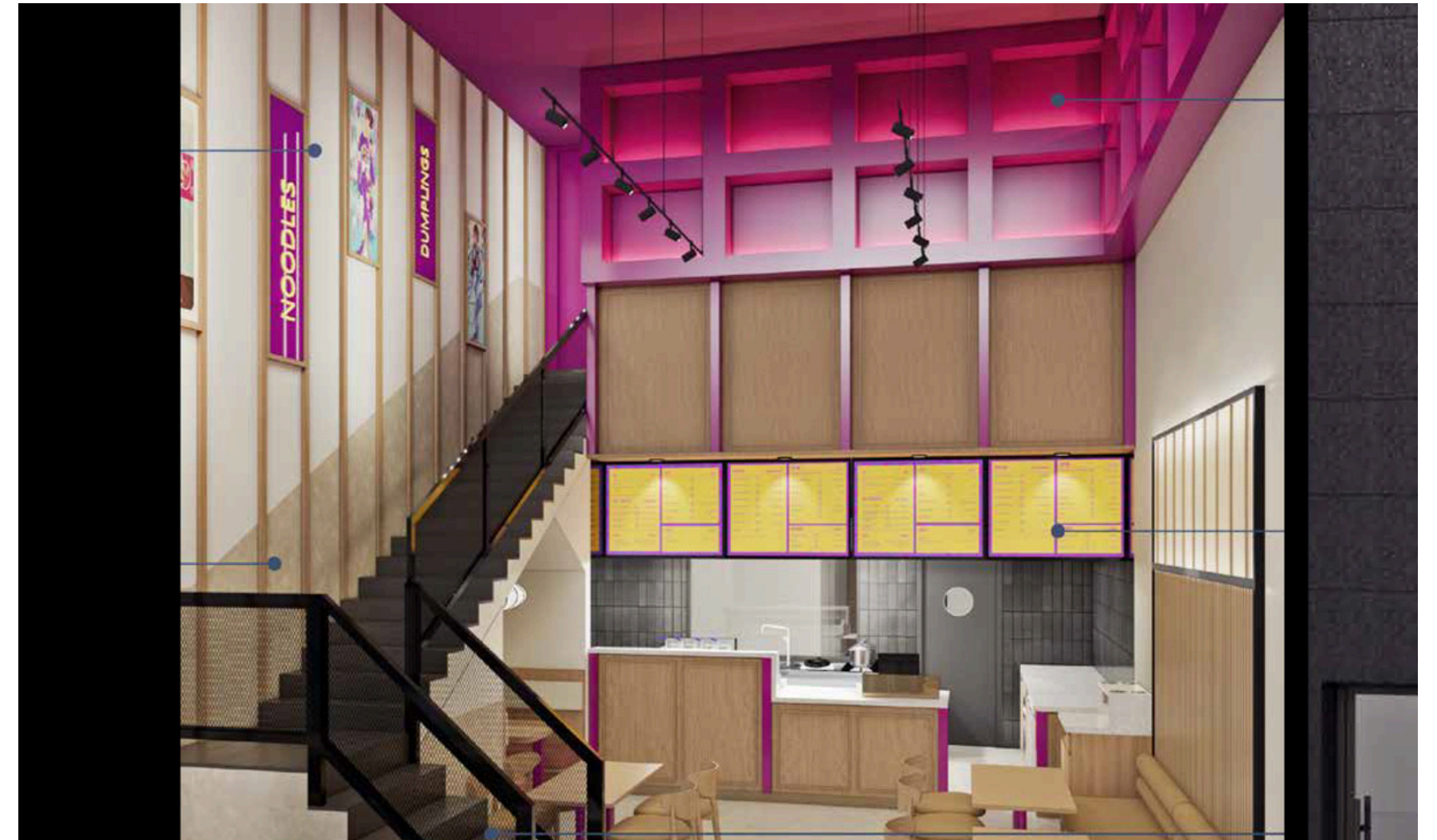
HOSPITALITY



Shobak

Khobar

Complete MEP services for this casual dining restaurant, including kitchen ventilation systems, efficient plumbing installations, and specialized electrical work for kitchen equipment.



Wokkong

Khobar

Full MEP design and installation for this Asian cuisine restaurant, featuring specialized ventilation for wok cooking, energy-efficient lighting, and comprehensive fire safety systems.

EXECUTED PROJECTS

HOSPITALITY



LA BOCA

Riyadh

Complete MEP services for this casual dining restaurant, including kitchen ventilation systems, efficient plumbing installations, and specialized electrical work for kitchen equipment.



JUNO

Riyadh

Full MEP design and installation for this Asian cuisine restaurant, featuring specialized ventilation for wok cooking, energy-efficient lighting, and comprehensive fire safety systems.

EXECUTED PROJECTS

OFFICES



Remat

Riyadh

Complete MEP design and installation for this executive office space, featuring premium lighting systems, advanced HVAC for optimal working conditions, and comprehensive electrical infrastructure.



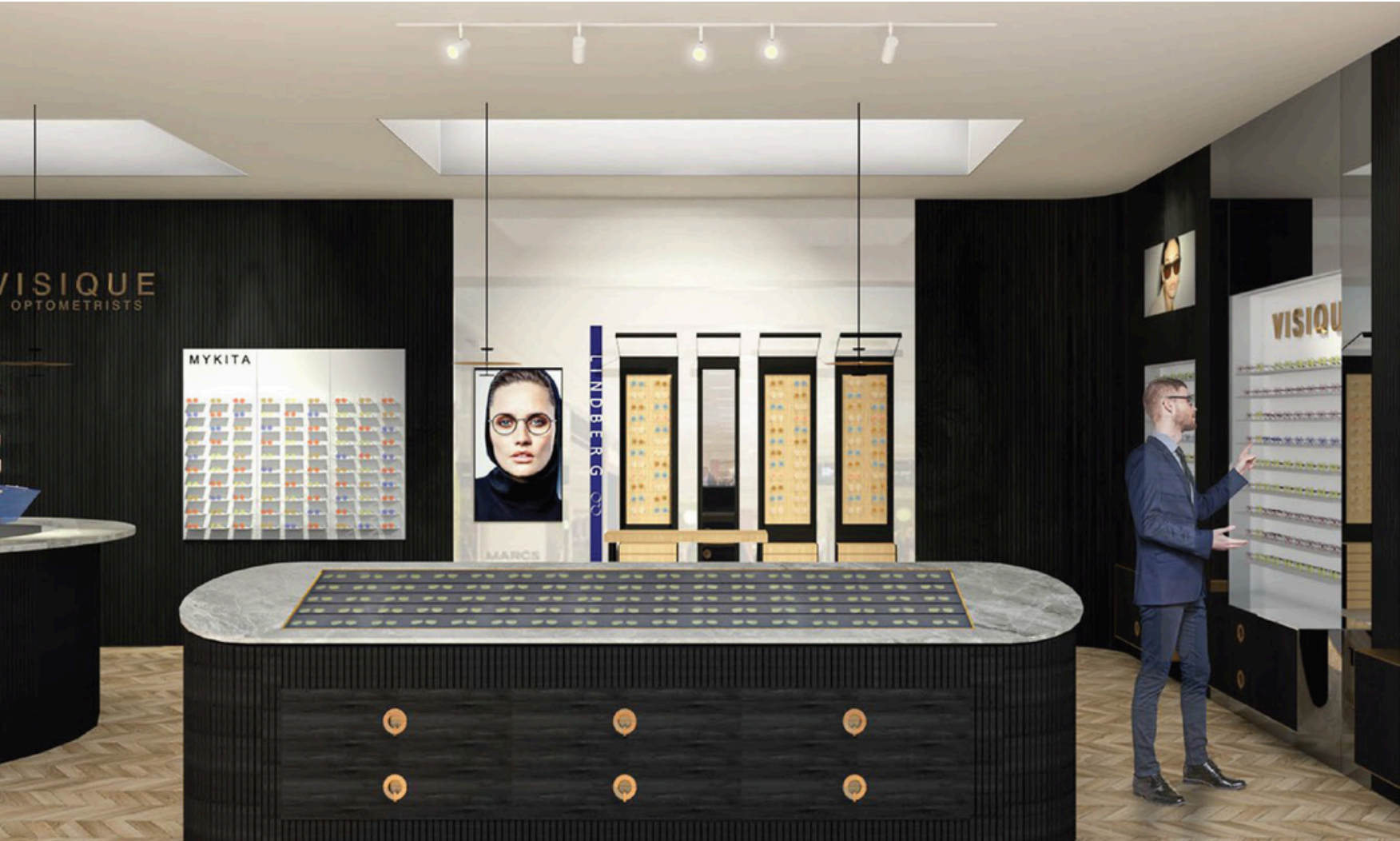
Najm

Riyadh

Modern office MEP systems including energy-efficient lighting solutions, climate control systems, and integrated building management for enhanced productivity and comfort.

EXECUTED PROJECTS

RETAIL



Visique

Riyadh

Premium retail space featuring sophisticated MEP systems designed to enhance the shopping experience while maximizing energy efficiency and operational performance.



Najm Manafeth

Riyadh

Full MEP design and installation including specialized acoustic solutions, energy management systems, and advanced fire protection for this corporate headquarters.

New Award Projects

Featured Projects



Nestle Offices

New Award

Location: Jeddah

Comprehensive MEP solutions for Nestle's corporate offices, featuring energy-efficient systems and advanced climate control.



VIVES Gym

New Award

Location: Riyadh

State-of-the-art MEP systems for this premium fitness facility, including specialized ventilation and humidity control.

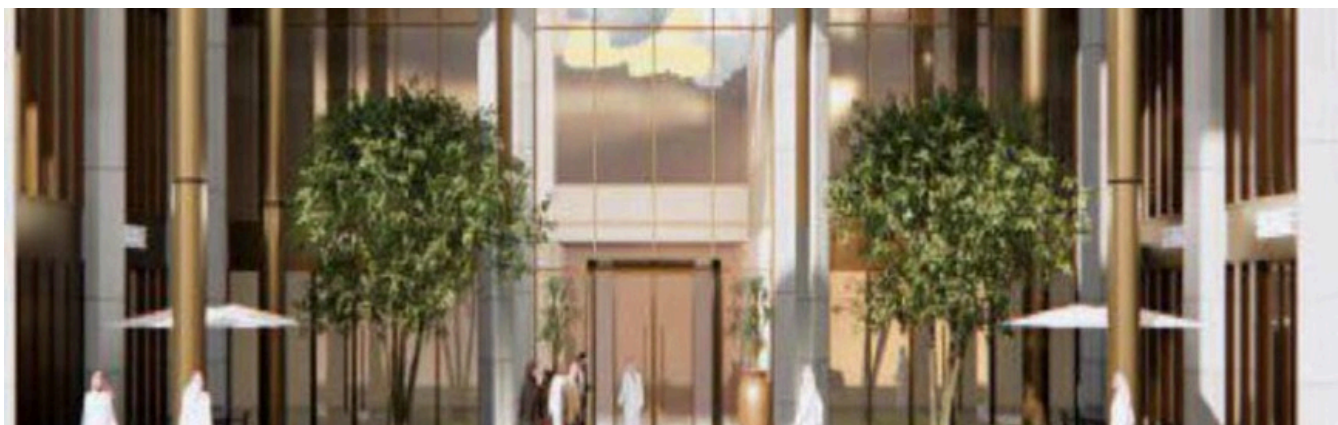


Supernova Restaurant

New Award

Location: Riyadh

High-end restaurant featuring sophisticated lighting systems and advanced HVAC for optimal dining comfort.



Abdullah Al Nemer

New Award

Location: Riyadh

State-of-the-art MEP systems for this premium Commercial project with integrated MEP systems.



Contact Us

YOUR BLUEPRINT FOR SUCCESS

“ VISIONARY MINDS SHAPING OUR FUTURE “

Ready to transform your project with innovative MEP solutions?
Contact us today.



Head Office

Anas Bin Malik Road, Riyadh
Kingdom of Saudi Arabia



Phone

+966 546876487



Email

info@B2Rmep.com



Website

www.B2Rmep.com

